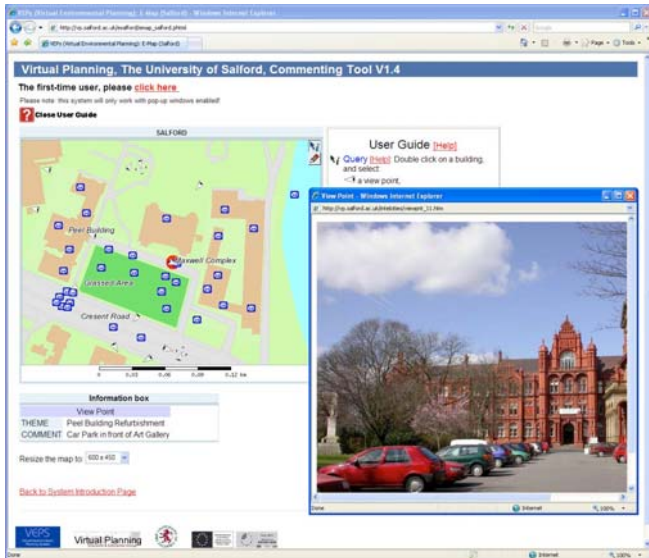


2D Commenting System Summary



The University of Salford has developed an online 2-dimensional (2D) commenting tool for public participation as part of the VEPs project. The tool [shown above] has a 2D map of an area scheduled for redevelopment and provides information about a proposed development plan for users to comment on.

With the Commenting System it is possible to:

- Respond to the plans (and to other people's comments) directly on the map
- View photographs of the area under discussion by selecting a viewpoint icon

Using a section of the University of Salford campus as an example case study area, the tool shows its potential for increasing public involvement in planning.

The main goal of the system is to enhance interaction between members of the public and local authorities to make the urban planning process more effective. The key objectives of the system are not only to empower the layman with information and tools which help them

understand the background of the planning area, but also to help members of the public participate in a dialogue amongst themselves and with planners. By using the 2D commenting system, users can publish their comments in the relevant area or feature of the map. In addition, they may check information about any feature on the map (e.g. building attributes, pictures etc.) and review existing comments left by other people.

The system has two main functions: *Query* and *Add a Comment*.

- The 'Query' tool helps users to get more detailed information about a feature. It allows users to find information in 4 different ways; i.e. discover general information about a building, see a photo of the view taken at a specific point and angle in the landscape, see a 360 degree panoramic image and see a location-related comment.
- The 'Add a Comment' function enables users to click on the map and add their comments regarding a specific area or map feature(s) (e.g. building, road etc.) When a user chooses this function and clicks on the map, the screen location of the clicked point is converted in to a real geographical coordinate. At the same time, a text input box appears on the screen for the user to add a message. The new comment is stored by the system as an attribute of the point alongside the geographical coordinates in the form of a "Shape" file. This information is held by the server and displayed by the on-screen map as an envelope icon. Other users then can view the existing comments by using the 'Query' tool discussed above.

Further information

Andy Hamilton Research Institute of the Built & Human Environment, University of Salford

Website: www.veps3d.org