

2D Commenting Tool (Clementine)

Background

VEPS is an alternative approach to planning consultation, allowing people to view and make comments on planning developments both in 2D and 3D web applications.

The project was a partnership headed by the Environment Agency for England and Wales. Further information about the project is available at www.veps3d.org

About the Clementine commenting tool

The system is designed to allow stakeholders to leave comments on a plan and to view the comments left by others. Comments are geocoded to associate them with specific locations.

Components

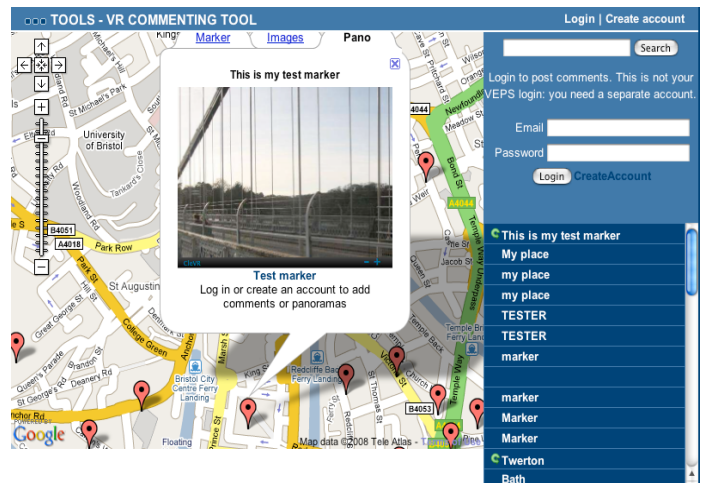
One of the main focuses of the work was to create an application with a simple user interface requiring little skill or training to create relatively complex content. Many of the processes formally involved have been automated. Running behind the scenes are 4 key components:

- The Ajax client
- The application server
- The Geospatial database
- The image server

Combined these 4 components allow users to create, upload, and view panoramic images and comments.

Panoramic Images

Stakeholders can take a series of digital images (these can be taken using any digital camera, and will work with freehand images, but for best results we recommend the use of a digital



camera with stitch assist mounted on a tripod or monopod) automatically join those images together and turn them into a 360 degree panorama (the stitcher will also allow users to create partial panoramas). The stitcher also contains a hotspot editor which allows users to create additional layers of interactivity within the panorama. The hotspot editor allows further media, such as; text comments, images and video to be displayed.

Adding comments and markers

Stakeholders can add markers to the base map simply by clicking on the relevant location. Comments, panoramas, and images can be added to that location and other users can respond to that information. All comments are stored in a database that would allow the information to be exported for further analysis.

Further information

If you encounter any problems or have any questions we'd be happy to talk to you. For further information please contact: james@clementine.info further support and information about panoramic images can be found at <http://www.clevr.com>